



Countryside Living...

A PERIODIC PUBLICATION OF THE DONALD ROSS LANDOWNERS ASSOCIATION, INC.

PBCE Public Water Service Backflow Protector

As of June 25, 2008 Jupiter Utilities will no longer require backflow devices to be installed. Florida Department of Environmental Protection and Florida Department of Health officials have now informed Jupiter Utilities the hookups can resume without the backflow devices. From what we have been told, DEP appears to have every intention of developing a more specific policy or rule for residential back flow preventers in the near future (think the end of July at the earliest to possibly as late as October) State officials may decide to enforce the backflow device installation again. They could start requiring the devices again, from that point on or they could make the ruling retroactive. We have been told it would be very unlikely for the state to require the devices retroactively, but they could, or they could do it from that point on. It was suggested that if you plan on hooking up to Jupiter water now is the time to do it.

Public input on backflow prevention devices:

The DEP plans to hold at least one meeting open to the public in July on the proposed installation of backflow prevention devices. For information, call (850)245-8623, go online to www.dep.state.fl.us or e-mail daniel.peterson@dep.state.fl.us

The following Frequently Asked Questions have been prepared to provide you with some insight into the issue surrounding the backflow protector when hooking up to Jupiter water.

Why has this just come up after hook-ups had already started in PBCE? After reviewing the code, the State of Florida's Department of Environmental Protection (DEP) wrote a letter to the Palm Beach County Health Department, along with all the other Health Departments in the state, and told them not to certify any new installations unless the water utility involved agreed to install the backflow protector device. For Jupiter to resume hook-ups they had to agree to install the device or the Palm Beach County Health Department would not release the health certificates for the last two sections of the water project. **What involvement does DEP have and what is this code?** Florida's DEP is responsible for protecting the quality of Florida's drinking water as well as its rivers, lakes and wetlands. The code deals with preventing cross-contamination between public water and untreated water.

Did this code just go into effect? This code has been in effect for a long time however it was not implemented. Recent events with the water in the City of West Palm Beach may have brought this code to the forefront. **Does this affect only Palm Beach Country Estates?** No, if this code has to be enforced it will affect the entire state. Several developments in Palm Beach County were on hold because of this requirement. **I already have Jupiter water service will I be required to add the backflow protector?** Not at this time, Jupiter is not requiring those who already have service to add the protector, but a final decision has not been made yet.

What is being done to stop this requirement? There is a lot of opposition to the enforcement of this code. Palm Beach County Utilities is opposed and is trying to fight the requirement. Florida House of Representative Carl J. Domino has written to the Department of Environmental Services requesting more information on the likelihood and necessity of the devices being mandated. South Indian River Water Control District has agreed to have their attorneys contact the State to remove this requirement. If no reversal takes place in two weeks from SIRWCD's June 16th meeting then they will pursue suing the State to change the rule. The Palm Beach County Commission has instructed their lobbyists to fight the requirement. **What are my options if I want to hook up water?** A Town of Jupiter Utilities representative suggested hooking up now, before the final ruling in July-October. As of June 25th you are not required to install the backflow device, but that may change. We hope that by the time you read this article this issue will be resolved to everyone's satisfaction.

Note: There have been several articles in the local newspapers covering this issue. While they are basically correct they do have some slight inconsistencies in the facts presented. We suggest you keep this in mind when reading any article on this subject.

Officers and Committee Members

Officers:

President - Chris Reinhardt	762-1281
1st Vice President - Kevin Baker	748-3376
2nd Vice President - Stephanie Duncan	575-7956
Treasure - Lynn Horne	972-4029
Secretary - Sheri Murray	601-1647

Committees:

COP Patrol & Disaster Assistance - Bill Bolds	626-7638
Entrance - Kirk Humphreys	748-4595
Beautification - Valerie Rozzo	743-3290
Car Shows - Scott Rice	723-5552
Helping Hands - Pam Malone	743-9912
Newsletter Editor/Advert. - Nicole Campbell	626-2530
Welcoming - Arie Strobel	748-6784
Sidewalks - Mike Danchuk	626-2530
Mom's Club - Sara Nakashian	748-7744
Disaster Response Team - Bill Bolds	626-7638
Parks/Playground - Sarah Applegate	741-1140
Sheri Murray	748-4595
Chris Reinhardt	743-8725
Tim Brown	748-0709
Bob Berman	627-1118

Information:

Equestrian - Beverly Bean	575-4411
bbeaninc@bellsouth.net	
RV/Camping Club - Connie McCormick	744-2938
SIRWCD - www.sirwcd.org	747-0550
Landowners Association - www.myPBCE.org	
Park - www.twistypinesplayground.org	

New Elementary School

The School Board officially accepted the name Marsh Pointe Elementary School.

Our new school will be the Marsh Pointe Elementary Panthers and the school colors are sky blue and yellow.

Also, to answer some of the immediate questions, they will have a school band and chorus, Safety Patrol for 5th graders, After Care and a Student Council. Once Principal Werner has met with her entire faculty she will have a better idea of the other activities that the teachers will sponsor. Some mentions have been Chess, Environmental, Fitness, Academic Games, Math and Science Exploration, etc. These teachers bring a plethora of experiences and ideas from their current schools.

The school number is 366-6800.
Maureen Werner, Principal



Message from the President

I would like to introduce myself. My name is Chris Reinhardt and I was born and raised in the Jupiter-Palm Beach Gardens area. My grandparents and parents moved to Jupiter in the 1940s. I have witnessed many changes in Palm Beach Gardens and especially Jupiter. One of the reasons I love Palm Beach Country Estates is it reminds me of how this area used to be. Even though I grew up in a small subdivision with real paved roads, concrete sidewalks and an elementary school we rode our bikes to, I still enjoyed driving along Alternate A1A and seeing all the cows in the pastures. As children we built forts and played in the woods, which is now the Gardens Mall. My grandmother owned a plant nursery in Jupiter, between Center Street and the Loxahatchee River. We spent our weekends playing in the river, watching pelicans and osprey catch fish, saying hello to the manatee that hung out in the water spillway at the edge of the property and even once swimming with a wild dolphin that visited children and boaters along the river. We also enjoyed going to the beach, and at that time we had never even heard of sea lice.

I've also lived in Jupiter Farms and the Acreage, so I'm very familiar with rural communities. We moved to PBCE in 2002 when our oldest daughter was ready to start kindergarten. We chose PBCE because of the great schools in the area and most of our family already lived in the neighborhood or close to it.

We had heard there was a park planned for the community. My brother, who also lives in PBCE and has worked on two Leathers & Associates playground projects in Florida, approached Bob Berman and Mike Danchuk about the idea of a volunteer-community built playground for the planned park. This is how Twisty Pines Playground was born.

In 2006, while working on the playground committee, Mike Danchuk asked me to consider running for secretary of the Landowners Association. I wasn't sure I wanted to be involved in any type of political organization. I always considered condo and homeowners associations as overbearing and controlling. Mike assured me that the Donald Ross Landowners Association was not that type of association and it was strictly voluntary. There's that word "voluntary". I was already volunteering for the playground committee, at both my daughters' schools, doing computer graphics work for two other non-profit organizations and also working part time. But, I thought this would be a good opportunity to stay informed about what was happening within the community. Mike was right about the Association. It's just a group of people who want only the best for our community.

No one will ever be able to fill Mike Danchuk's shoes. Over the past 20 years Mike has worked tirelessly on the board, on various committees and behind the scenes to ensure our community remains one of the best places to live. Mike assures me he will be around to help with the transition as I try to follow in those very large footsteps. I will do my best to ensure Palm Beach Country Estates remains one of the best places to live in Palm Beach County. *Chris Reinhardt -President*

JEFF STROBEL

AIR CONDITIONING

All Your Cooling & Heating Needs

561-748-4553

WE SERVICE AND INSTALL ALL
MAKES AND MODELS
RESIDENTIAL - COMMERCIAL
SAME DAY SERVICE AVAILABLE
ALL MAJOR CREDIT CARDS ACCEPTED



TRANE

It's Hard To Stop A Trane®

Amana®

A.O. Smith Water Heaters

JEFF STROBEL GAS ENERGY

Call us at 561-748-4553

For all your gas appliance needs:
**Generators, pool heaters, water heaters, and
tankless water heaters**

INSURED AND LICENSED - CAC058451 and LP21949
Have a cool day!

PBCE - Car & Motorcycle Show (Date to be announced)

Please contact Scott Rice 723-5552 or Mike Danchuk 339-3485 for more information on showing your favorite toys in a future car show. Trophies will be awarded in several categories. Food will be available. Bring your exotic, your antique or your favorite car or motorcycle. Let your neighbors see that special ride!

Jog Road

The County advertised the project for bid in the Palm Beach Post on Sunday June 22. The next advertisement will run again Sunday, June 29th, with the mandatory pre-bid meeting for contractors scheduled for July 8, 2008, and bid opening scheduled for July 24, 2008. They expect that construction will begin on or about October 1, 2008, and should take approximately 12-14 months.

Property owners who are adjacent to any portion of the right-of-way for this project will receive certified letters instructing them to remove any encroachments that they might have from the right-of-way; they mailed the letters June 25. Any encroachments in the right-of-way must be removed on or before September 30th, and that's all explained in the letter.

Aluminum Can Drive

The Russell family has kindly agreed to take our aluminum to a recycling center. This aluminum will be sold, and all of the money will go toward Twisty Pines Playground. To make this project work, we need the help of the community.

Are you willing to be a drop-off point for neighborhood aluminum? We need 6 or 8 residents to agree to have neighbors drop aluminum at their home. Then, on scheduled days, they will deliver the aluminum to the Russell family.

We also need ALL of our residents to help us obtain aluminum. Don't put your aluminum in your bins. Instead, drop it at your closest drop off point. Link to www.twistypinesplayground.org or email Sarah at scrapple@comcast.net to find these drop off locations.

Sandhill Realty



INC.

When you are ready to buy or sell, call the agency that specializes in the north county.

FULL SERVICE LISTINGS STILL AT 4% COMMISSION.

BUYERS: ASK ABOUT OUR FREE JOHN DEERE LAWN TRACTOR AT CLOSING!

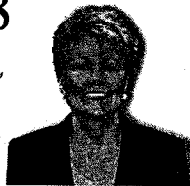
561-626-4978

To see all PBCE MLS listings, go to our website:

www.sandhillrealty.com



Michael Danchuk
REALTOR®
CELL 561-339-3485



Nicole Campbell
LICENSED BROKER-OWNER
CELL 561-339-0469

312 S. Old Dixie Hwy.
Suite 201
Jupiter, FL 33458

Living Oaks Ministries Church of God

14156 64th Drive North
Palm Beach Gardens, FL 33418

Pastor Larry Richardson
561- 627-9288

Sunday 9:45 – Bible Study for all Ages
10:30 – Morning worship
Wednesday 7 – 8 PM – Youth group & Bible Study



Peter Muirhead

Juno Beach Tire and Auto Center
13841 U.S. Highway One, Juno Bch, FL 33408
(561) 624-2211 Fax: (561) 624-4669
Email: junotire@bellsouth.net

GOODYEAR
PBCE RESIDENT SINCE 92
ASK ABOUT THE PBCE DISCOUNT

Guy DiVosta's

TRENDEX HOME CORP.

Continuing his family's tradition of excellence.

CUSTOM SUPERIOR QUALITY

NEW HOMES - ADDITIONS

561-575-HOME (4663)

BUILDING CERTIFIED GREEN HOMES

Cathy Lee West

Exclusive Agent
The West Agency, Inc.



Allstate

You're in good hands.

24-Hour
Customer Service

Allstate Insurance Company

5602 PGA Boulevard
Suite 105 B
Palm Beach Gardens, FL 33418

Phone 561-622-5200
Fax 561-622-5669
CathyLeeWest@allstate.com

Auto, Home, Business, Life



WOODLAND Enterprises Inc.

Custom Homes - Remodels

Garages

Guest Houses - Pool Cabanas

Mother-in-Law Suites

Driveways

Call for Free Consultation - (561) 575-7565

www.woodland-enterprises.com

Mobile Lawn Mower Repair

You break 'em We fix 'em

All Brands

22 years local experience

Repaired at your location

Tim Foley
561-685-0170

